



Semi-annual Facility Site Visits

Mildred Randolph, DVM, DACLAM
Adjunct Professor
Director of Seed
UAMS

Vice-President for Research or the
Institutional Official



Reviewing a few protocols each month

SEMI-ANNUAL...WHAT?

Inspecting?

Inspecting
what?

Inspecting
where?



Looking for what?

Program Reviews?

What is this ALL about?

WHAT?

IACUC Semi-Annuals



Opportunity to Monitor Effectiveness

- ▶ Animal Care and Use Program
- ▶ BUT what is an Animal Care and Use Program?

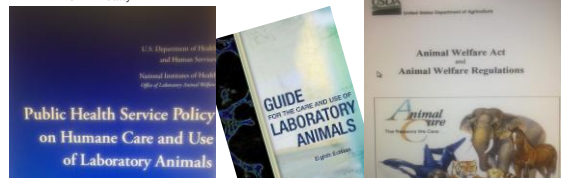
Animal Care and Use Program

- ▶ The Guide: Activities conducted by and at an institution that have a direct impact on the well-being of animals.
- ▶ AAALAC: An institutions involvement with related to policies for animal care and use, environment, housing/management, veterinary care and all animal facilities.
- ▶ Mildred: Basic training for new and or old IACUC members is to be able to *define* the Animal Care and Use Program at their Institution.

WHY?

IACUC's are mandated to *regularly* inspect animal facilities and perform program reviews

- ▶ PHS policy and Animal Welfare Act—Twice yearly
- ▶ AAALAC –Annually



WHEN?

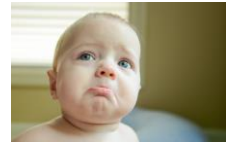
Facility inspections are commonly done in the same time period as the "program review"

* Large programs are commonly adopting an ongoing facility inspection process that can be spaced through out the year

WHO?

Two IACUC members

Any member who wishes to attend



WHO?

Any trained and qualified person



Which of these describes WHO goes on institution's facility site visits?

- ▶ A. The IACUC office appoints someone to go on a rotational basis?
- ▶ B. The IACUC office appoints and offers training (for new members) before facility visits?
- ▶ C. The IACUC doesn't appoint anyone and has difficulty getting participation in facility site visits?

Preparing for the Facility Inspections requires Training:

- Where are we going?
- Previous Evaluations?
- Review the Protocol?
- What should you wear?
- Entrance requirements and traffic patterns?
- What are your goals?
- What is your message?

SHARING THE *MESSAGE* FROM THE COMMITTEE:

Inspection: the act of looking at something closely in order to **learn** more about it ...or **to find the problem**.



Announced vs. Unannounced



Great Staff make the process better: experienced, invested, and trained (CPIA)



It can be **OVERWHELMING**. BUT...

Animal Well-Being

Research Integrity

*Personnel Health and Safety

Where do they keep the animals?



ColonyRack that allows any mouse to access any cage on the rack



Look at the Signage

- ▶ Please Wean!
- ▶ Overcrowded!



Pocket Gopher Housing



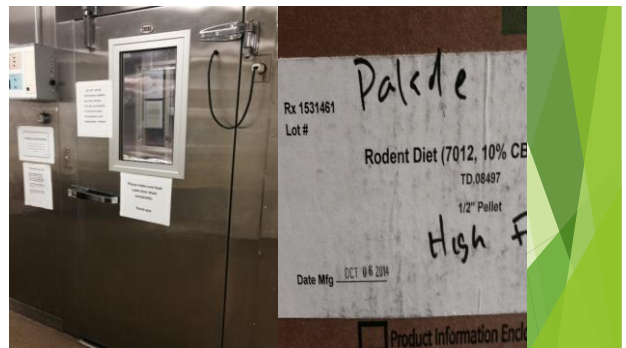
The IACUC needs to see what they have approved.



Prolonged restraint



Open the Refrigerator



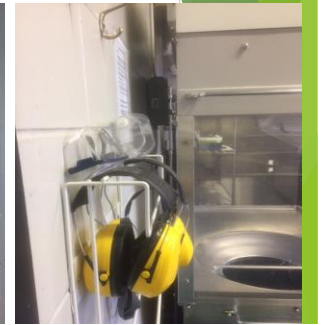


Use of Permethrin Eradicated the Tropical Rat Mite (*Ornithonyssus bacoti*) from a Colony of Mutagenized and Transgenic Mice
WILLIAM A. HILL,*, MILDRED W. RANDOLPH, KELLI L. BOYD,2 AND TIMOTHY D. MANDRELL



CAGEWASH!





Reporting Noncompliance or Mistreatment of Research Animals at UAMS

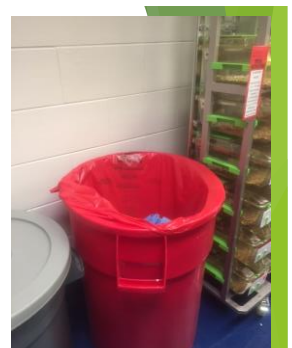
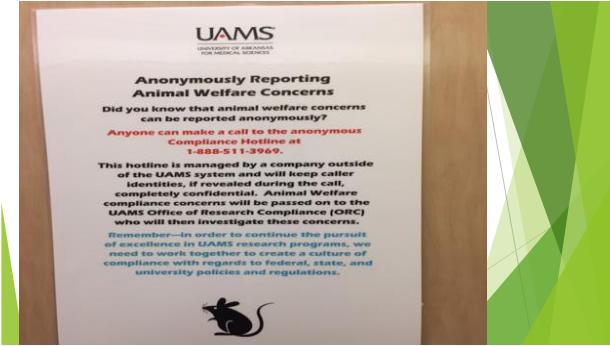
Concerns or complaints may be brought to the attention of the IACUC or IACMA by any member of the community or the general public. Reports may be made anonymously. The identity of individuals reporting concerns will be maintained to the degree highly possible. No action shall be retaliated against as a result of reporting concerns. This subcommittee reports to the IACUC. All reports will be treated in a fair and professional manner throughout the investigation.

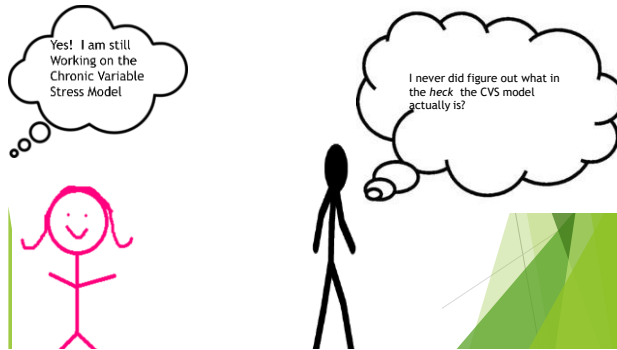
Concerns or complaints regarding animal usage shall be immediately addressed to protect the welfare of the animals. In investigations, the attending veterinarian or designer should be contacted immediately. The attending veterinarian or designer shall take any necessary action designated under Animal Use Policy (AUP). The committee will provide the IACUC with all reports to the IACUC Chair in order to provide the IACUC Chair with an investigation and report to the full committee all of the following:

- A) All accusations brought to the attention of the committee
- B) Chemical analyses by the IACUC Chairman and IACUC veterinary staff
- C) Required monitoring or actions reporting to regulatory agencies
- D) Required evidence including additional testing, good practice, temporary suspension of activities or other actions deemed necessary by the IACUC
- E) A written summary of findings and actions will be forwarded to the concerned parties and the Institutional Official
- F) An ultimately compliance, violation or IACUC number will be disseminated again, or subjected to any reprisal for reporting suspected noncompliance.

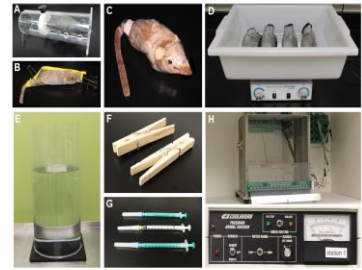
IACUC approved March 2013
Updated March 2016

Contact Information: IACUC Director: 505-271-2822
IACUC Office: 280-2822
Vice-Chairman for Research: 505-271-2822
Research Compliance Office: 505-271-2822

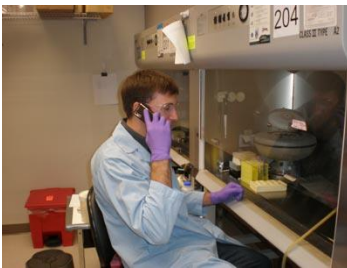




Chronic Variable Stress Model



BSL2 procedures



Satellite Facilities or Study Areas

- ▶ PHS...any animal containment outside of a core facility housing animals for more than 24 hours
- ▶ USDA... any building, enclosure, or other containment outside of a core facility in which animals are housed for more than 12 hours."

Satellite areas should mimic the standards in the animal facility

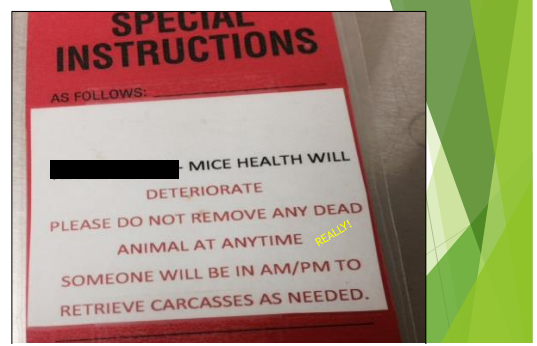


Satellite facilities



- ▶ Many times these species are held in investigators laboratories.
- ▶ Monitoring (24 hour) water quality.
- ▶ Software with paging capabilities.

Date	High-Low temperature range (in lab tank)	Fish Checked?	Fish kept?	Tanks cleaned?	Comments	Initial
14	20-25	✓	✓	✓		JK
15	20-25	✓	✓	✓		JK
16	20-25	✓	✓	✓		JK
18	20-25	✓	✓	✓		JK
19	20-25	✓	✓	✓		JK
20	20-25	✓	✓	✓		JK
21	20-25	✓	✓	✓		JK
22	20-25	✓	✓	✓		JK
23	20-25	✓	✓	✓		JK
24	20-25	✓	✓	✓		JK
25	20-25	✓	✓	✓		JK
26	20-25	✓	✓	✓		JK
27	20-25	✓	✓	✓		JK
28	20-25	✓	✓	✓		JK
29	20-25	✓	✓	✓		JK
30	20-25	✓	✓	✓		JK
31	20-25	✓	✓	✓		JK



Primary enclosure



MRI and Micro PET



Review other activities also

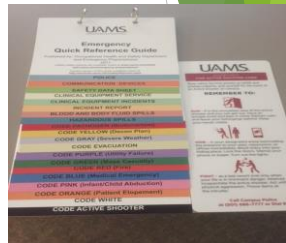
► Transportation policy



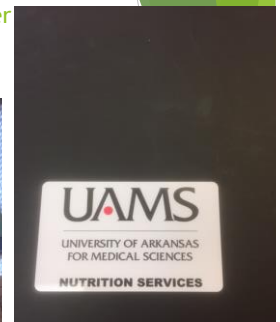
Great Ideas come from empowered staff



Make sure the Institution's Emergency Preparedness Program has incorporated the IACUC approved Disaster plan



Disaster response: teams, shelter and food



Handling Findings and Deficiencies

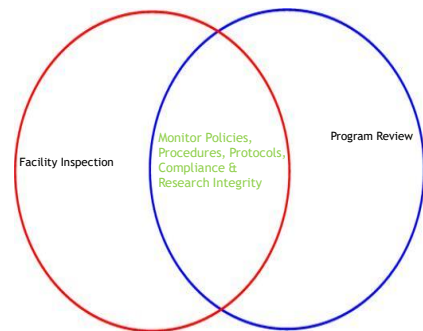
- ▶ Report any serious or continuing noncompliance
- ▶ Report serious deviations from the Guide
- ▶ Report minority opinions

Minor and Significant Findings

- ▶ Establish a reasonable and specific plan
- ▶ Schedule the date(s) for correction
- ▶ All findings are included in report to the IO
- ▶ Uncorrected deficiencies: Reportable to regulatory and funding agencies after 15 business days

When Findings are identified...it may be time to Examine Effectiveness of Training Program

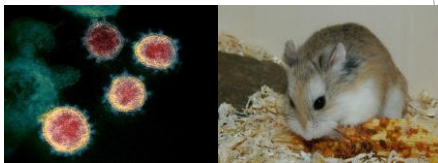
- ▶ Strengths
- ▶ Weaknesses
- ▶ Scope



Symbolic of a larger issue... \$\$\$



- ▶ Don't let your committee *miss the opportunity* to communicate the Status of your Program to the Institutional Official



Dwarf hamster; SARS-Covid19

