

National Institutes of Health
Office of Laboratory Animal Welfare

Office of Laboratory Animal Welfare (OLAW) Updates
CDR Temeri Wilder, DVM, MPH, DACLAM

IACUC 101, FEBRUARY 2024

1

Learning Objectives

- ▶ Understand NIH's and OLAW's mission
- ▶ Discuss NIH updates
- ▶ Identify upcoming educational opportunities
- ▶ Know where to find resources

2

Who We Are

NIH is largest public funder of biomedical research in the world.



Clinical Center (Building 10), NIH Campus

3

NIH Mission

To seek fundamental knowledge about the nature and behavior of living systems and the application of that knowledge to enhance health, lengthen life, and reduce illness and disability.



4

NIH FY2022 By The Numbers

58,368 extramural grant awards totaling \$33.3 billion

Supported research at 2,707 organizations

5

How does NIH support the highest quality research? By promoting:

Sound science

- Appropriate research strategies
- Data integrity
- Translatability
- Reproducibility

Responsible and humane animal care and use

Where appropriate:

- Animal reduction, refinement, replacement
- Suitable animal models, species, ages, sexes, #s
- Data sharing

6



Who is OLAW?

7

OLAW Mission

- ▶ OLAW provides guidance and interpretation of PHS Policy, supports educational programs, and monitors compliance with the Policy by Assured institutions and federal funding components to **ensure the humane care and use of animals** in federally supported research, testing, and training and thereby contribute to the quality of research.

8

OLAW'S Responsibilities

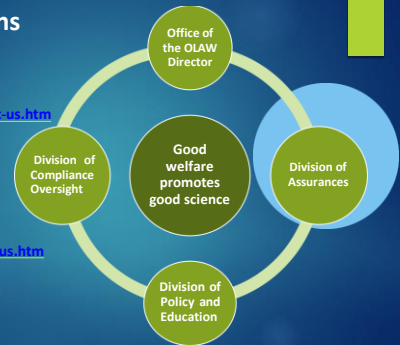
- Oversee implementation of the PHS Policy**
- Provide interpretation and guidance**
- Educational activities**
 - Workshops/Training
 - Resources
 - Webinars
- Negotiate Animal Welfare Assurances**
- Evaluate compliance**
 - Institutional self reporting
 - Third party allegations
 - Whistleblowers

9

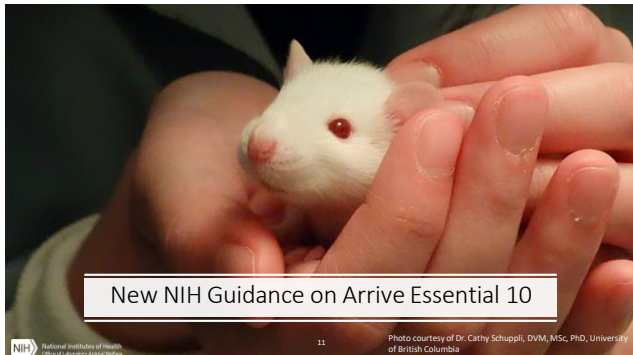
OLAW'S Divisions

Contact us for assistance, questions, comments:
<https://olaw.nih.gov/contact-us.htm>

Find out more about us:
<https://olaw.nih.gov/about-us.htm>



10



11

NOT-OD-23-057

NIH Encourages the Use of the ARRIVE Essential 10 Checklist in All Publications Reporting on the Results of Vertebrate Animal and Cephalopod Research

<https://grants.nih.gov/grants/guide/notice-files/NOT-OD-23-057.html>

ARRIVE guidelines	
Essential 10	
1.	Study Design
2.	Sample size
3.	Inclusion and exclusion criteria
4.	Randomization
5.	Blinding/Masking
6.	Outcome measures
7.	Statistical methods
8.	Experimental animal
9.	Experimental procedures
10.	Results

<https://arriveguidelines.org/arrive-guidelines>

12

Proposed Guidance to Assured Institutions on Cephalopod Care and Use



NIH National Institutes of Health Office of Laboratory Animal Welfare

13

OLAW's Webpage on Cephalopods in Research



NIH National Institutes of Health Office of Laboratory Animal Welfare

Cephalopods in Research

The use of cephalopods in research is a growing field, and the following resources are provided to assist institutions in maintaining good animal welfare while working with these species.

On this page:

- Request for Information
- What are Cephalopods?
- Cephalopods in Research
- Quick References
- Laws, Policies, and Guidance
- Pain Perception, Neurobiology, Cognition, and Learning
- Cephalopod Medicine and Welfare
- Questions?

[View OLAW's proposed guidance on cephalopods in research.](#)

14



21st Century Cures Act Updates


NIH National Institutes of Health Office of Laboratory Animal Welfare

15 Photo courtesy of Dr. Cathy Schuppli, DVM, MSc, PhD, University of British Columbia

15

21st Century Cures Act

- ▶ Request for Information (RFI): Proposed Guidance for Reporting Noncompliance
 - Comment period closed; analyzing comments
- ▶ RFI: Proposed Guidance for Clarifying Animal Activities Exempt from IACUC Review
 - Comment period closed; analyzing comments




NIH National Institutes of Health Office of Laboratory Animal Welfare

14

16

21st Century Cures Act

- ▶ RFI: Flexibilities for Streamlining IACUC Review of Protocols and Significant Changes
 - Comments period closed; analyzing comments
- ▶ Final Guidance on Guidance on Flexibilities for Conducting Semiannual Program Review: NOT-OD-23-129
 - <https://orants.nih.gov/orants/guide/notice-fies/NOT-OD-23-129.html>



NIH National Institutes of Health Office of Laboratory Animal Welfare


15

17

OLAW/USDA Collaborative Survey on Reducing Administrative Burden

- Survey for IACUC administrators
- Closed on September 15, 2023
- Investigator survey pending

21st Century Cures Act



NIH National Institutes of Health Office of Laboratory Animal Welfare

18

18



Education Opportunities

19

Upcoming Events:

USDA AWIC Workshop
(Virtual Workshop) March 6-7, 2024

AALAS
(Nashville, TN) November 3-7, 2024

PRIM&R Annual Conference
(Seattle, Washington) November 17- 20, 2024

SCAW
(San Antonio, TX) December 9-10, 2024



20



Consolidated Resource List

21

Resources:

- [OLAW Website](https://olaw.nih.gov/)
- [PHS Policy Tutorial](https://olaw.nih.gov/resources/tutorial/)
- [Frequently Asked Questions \(FAQs\)](https://olaw.nih.gov/guidance/faqs/)
- [Reporting Noncompliance](https://olaw.nih.gov/guidance/reporting-noncompliance.htm)

22

Thank you!

23